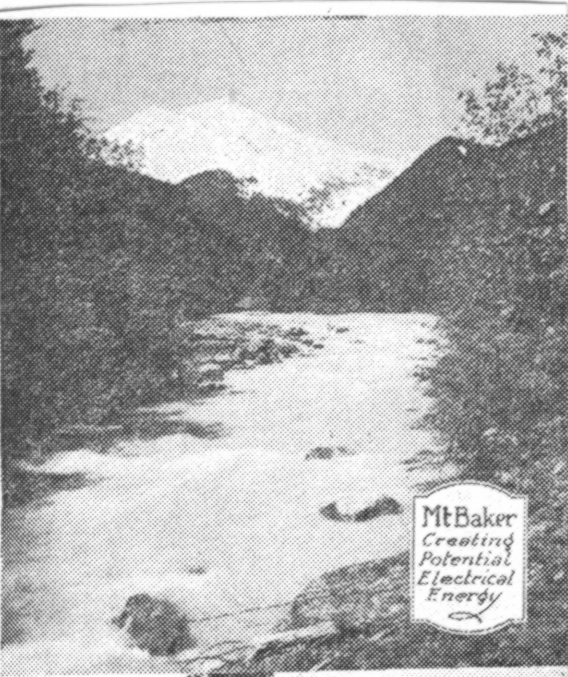


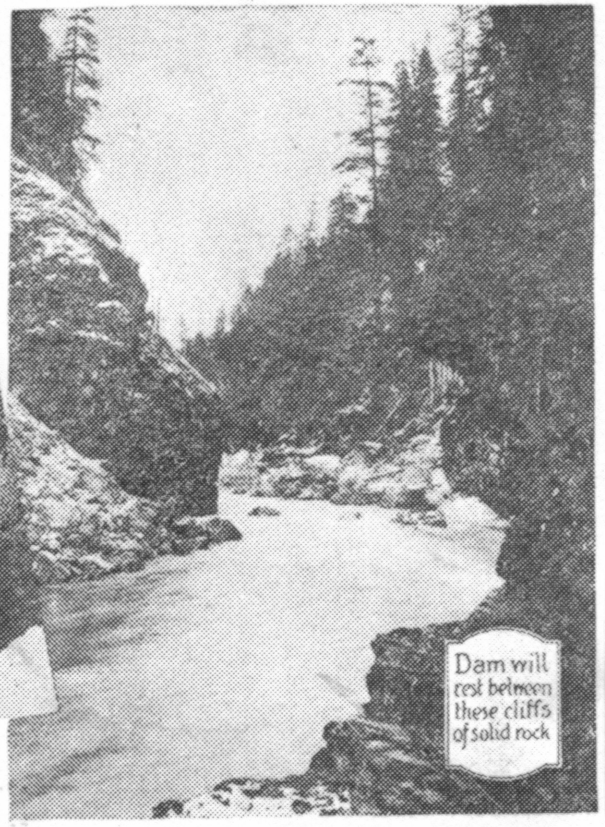
\$6,000,000 in Giant Baker River Electrical Development



Mt Baker
Creating
Potential
Electrical
Energy



Leonard Falls
Height
Estimated
900 ft.



Dam will
rest between
these cliffs
of solid rock



Mt Shuksan
Corner of
Lake 17' South
in foreground
Here's another
Peak

MOUNT VERNON DAILY HERALD

Water power development of the Pacific northwest will receive great impetus in the announcement of the Puget Sound Power & Light company that it will immediately begin the construction of a 45,000 horsepower hydro-electric plant on the Baker river in Skagit county, representing an investment of \$6,000,000. Foundations and approximately a depth of 50 feet of the dam are scheduled for completion this year and the entire work will be finished in 1925—regarded by engineers as remarkable speed for the construction of such an important hydro-electric unit.

To meet immediate demands for larger production of electrical energy the Puget Sound Power & Light company is spending another million dollars in the enlargement of the capacity of the White river plant, located between Seattle and Tacoma. Together with the scheduled outlay for extensions it means that the company this year and next will invest upwards of \$10,000,000 in the enlargement of its facilities for serving the people of Washington.

The Baker river is looked upon as one of the most interesting electric generating installations in all the northwest, so rich in water powers. Bearing a steady and dependable flow of water the Baker river comes tumbling down from Baker lake, close up to Mount Baker and Mount Shuksan.

As it falls out of Baker lake it passes through Sulphur canyon where there is a splendid potential development that will come as soon as needful following the completion of the present installation at Eden canyon, twelve miles below Sulphur canyon. Water from the impounding dam in these canyons will create a lake approximately eight miles long and reaching almost to the upper canyon. This lake will be 1600 acres in extent, storing 50,000 acre feet of water.

Eden canyon is but a short distance from the confluence of the Baker and Skagit rivers, just outside the town of Concrete, where the plant of the Superior Portland Cement company is located. A narrow chasm of solid rock has here been hewn out by nature leaving an ideal location for the installation of a concrete dam that will be 235 feet in depth from the solid rock at the bottom of the can-

pany will probably install an aerial tramway at a cost of \$100,000.

Under the direction of Engineer W. D. Shannon, preliminary work is already beginning in Eden canyon, though some snow is upon the ground.

"We are pleased to announce the beginning of construction on this important unit of our power developments," said A. W. Leonard, president of the Puget Sound Power & Light company. "We expect to be generating 30,000 horsepower of electrical energy at the Baker river plant by the end of next year, and later will install an additional turbine to bring the full capacity up to 45,000 horsepower.

"The Baker river will therefore be the second of our plants in point of capacity, with the White river plant now producing 61,662 horsepower, and another unit soon to be increasing its capacity materially. Snoqualmie falls and Electron now produce each approximately 27,000 horsepower. These new installations, together with our other hydro-electric plants and our steam plants will provide the Puget Sound Power & Light company with approximately 225,000 horsepower of electrical energy serving some 250 cities, towns and communities from the Canadian border into northern Oregon and across the Cascades into the Wenatchee valley."

Next on the program of the Puget Sound Power & Light company after the announced development on Baker river probably will be the installation of a hydro-electric plant at Sulphur canyon almost as large as that near Concrete. The waters of the Baker river will then be utilized in two steps, the Sulphur canyon site having not quite the same amount of water available due to the fact that two or three tributaries flow into the Baker river between the two.



Eden Canyon,
Baker River
where 235 ft.
Concrete Dam
will rise 50 feet
above Railway
on right

Photos
Asahel Curtis